

Tilt 50 WireFree™ RTS Programming and Operation Instructions

New and Improved

- Sound
- My position

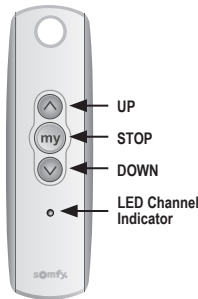
Before you begin

Motors are shipped without limit switch settings and transmitter IDs. Steps (1-6) must be completed to ensure proper shade programming and functionality. Power should ONLY be connected to current shade being programmed. All other shades should be disconnected from their respective power while programming is in progress. While programming (step 4), shade should not be inactive for longer than 2 minutes or motor will exit programming mode.

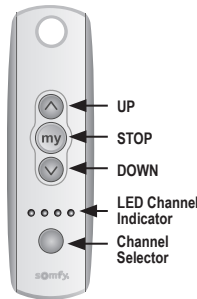


Programming Instructions are for use with Telis 1 & 4, DecoFlex 1 - 4, Modulis or Telis 1 Chronis Timer

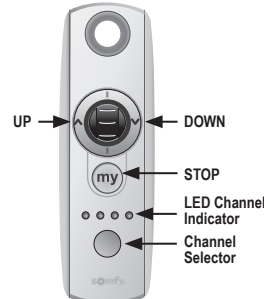
The following illustrations and instructions represent the Telis hand-held remote and may also be applied to the DecoFlex WireFree™ RTS Switch and Telis 1 Chronis Timer.



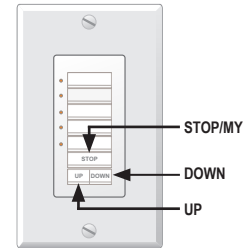
Telis 1 RTS Transmitter



Telis 4 RTS Transmitter



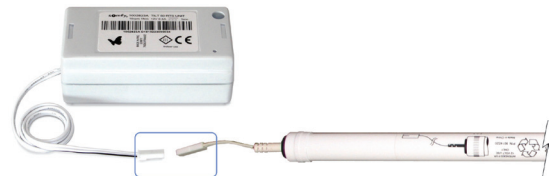
Telis 4 Modulis RTS Transmitter
(With tilt wheel)



DecoFlex WireFree™ RTS Switch
(Standard)

STEP 1 Connect Power to Motor

- 1) Connect 12V battery wand or transformer to the motor.
Motor should already be installed in the blind.



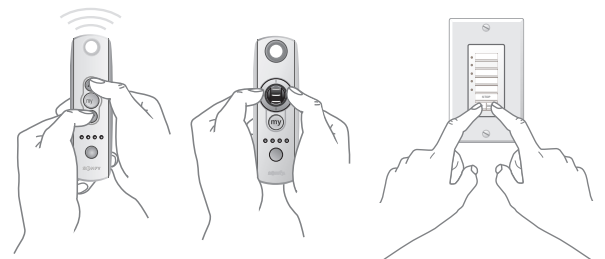
STEP 2 Initiate Programming – (for use with Telis 1 & 4, DecoFlex 1 - 4, Modulis or Telis 1 Chronis Timer)

For Single Channel Transmitters (Telis 1, Modulis, Telis 1 Chronis Timer or DecoFlex 1)

- 1) On the transmitter, press and hold the **UP** and **DOWN** buttons simultaneously until the blind jogs (blind slats have a short up and down tilt movement).

For Multi-Channel Transmitters (Telis 4, DecoFlex 4)

- 1) Using the channel selector, select the desired channel.
- 2) On the transmitter, press and hold the **UP** and **DOWN** buttons simultaneously until the blind jogs.



NOTE: This step cannot be performed if the transmitter has previously been programmed (paired) to the blind.



Tilt 50 WireFree™ RTS Programming and Operation Instructions

STEP 3 Check Polarity (blind direction) **NOTE: Must be determined before setting blind limits**

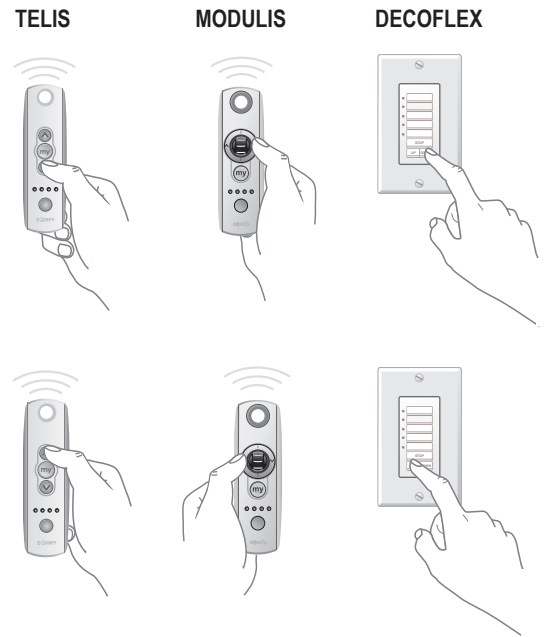
Press and hold the **DOWN** button and confirm the blind tilts down.

Press and hold the **UP** button and confirm the blind tilts up.

- If blind direction is correct, continue to Step 4.
- If blind direction is not correct (in reverse), press and hold the **MY (Stop)** button on the transmitter for 2 seconds.

Blind will jog. Blind direction is now corrected.

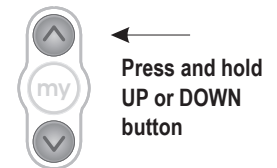
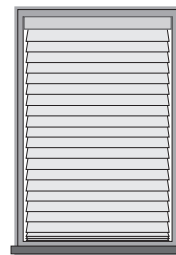
Blind movement should now correspond to the direction button on the transmitter.



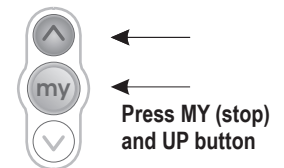
STEP 4 Setting Limits (slat positions)

Starting with slats in down (closed) position

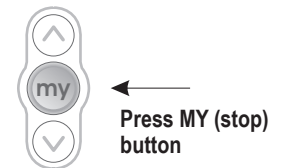
1. Press and hold the **UP** or **DOWN** button on the transmitter to reach the desired lower limit (slat position).



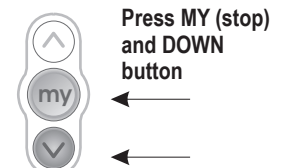
2. Once the desired lower limit (slat position) is reached, press and hold the **MY (Stop)** and **UP** buttons simultaneously until the blind begins to tilt upward, then release.



3. Press the **MY (Stop)** button when the blind reaches the desired upper limit (slat position). If necessary, adjust the desired slat position with a brief press of either the **UP** or **DOWN** button.



4. Once desired upper limit (slat position) is reached, press and hold the **MY (Stop)** and **DOWN** buttons simultaneously until the blind begins to tilt downward, then release.



Tilt 50 WireFree™ RTS Programming and Operation Instructions

5. Once the blind stops at the previously set lower limit (slat position), press the **MY (Stop)** button for 2 seconds until the slats jog. This confirms both limits (slat positions).

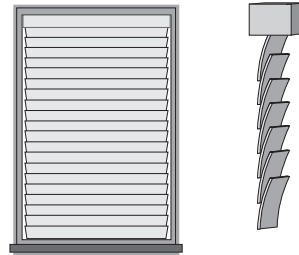
To complete programming, proceed to **STEP 5**.



←
Press MY (stop) button (for 2 seconds)

Starting with slats in up (closed) position

1. Press and hold the **DOWN** or **UP** button on the transmitter to reach the desired upper limit (slat position).



←
Press and hold UP or DOWN button

2. Once the desired upper limit (slat position) is reached, press and hold the **MY (Stop)** and **DOWN** buttons simultaneously until the blind begins to tilt downward, then release.



←
Press MY (stop) and DOWN button

3. Press the **MY (Stop)** button when the blind reaches the desired lower limit (slat position). If necessary, adjust the desired slat position with a brief press of either the **UP** or **DOWN** button.



←
Press MY (stop) button

4. Once desired lower limit (slat position) is reached, press and hold **MY (Stop)** and **UP** buttons simultaneously until the blind begins to tilt upward, then release.



←
Press MY (stop) and UP button

5. Once the blind stops at the previously set upper limit (slat position), press the **MY (Stop)** button for 2 seconds until the slats jog. This confirms both limits (slat positions).



←
Press MY (stop) button

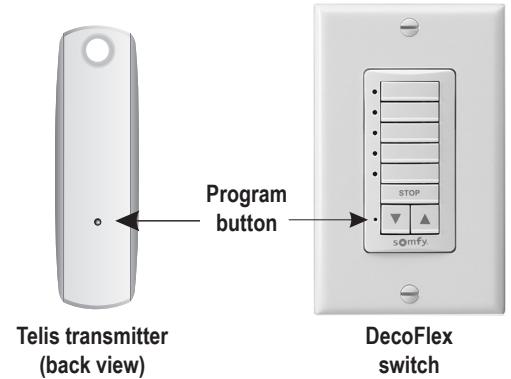
To complete programming, proceed to **STEP 5**.

Tilt 50 WireFree™ RTS Programming and Operation Instructions

STEP 5 Completing and Exiting Programming Mode

Using a paperclip or pen, press and hold the **PROGRAM** button on the back of the transmitter until the blind jogs once. TRANSMITTER IS NOW MEMORIZED AND PROGRAMMING IS COMPLETE.

NOTE: If power is disconnected from the blind before Step 5 is completed, THE TRANSMITTER WILL NOT BE MEMORIZED to the programmed blind. However, limits (slat positions) will remain programmed. If this occurs, go back and repeat step 2 (Initiate Programming). Then omit step 4 (Setting Limits) and resume with step 5.



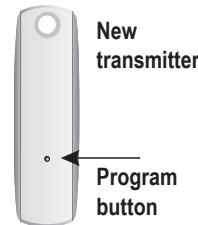
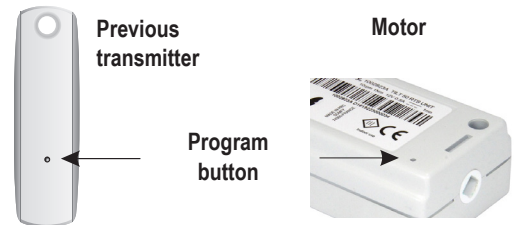
STEP 6 Adding Additional Transmitters or Assigning Channels

Adding Additional Transmitters (single channel)

1. Using a paperclip or pen, press and hold the **PROGRAM** button on the previously addressed transmitter until the blind jogs once.

OR

- 1a. Using a paperclip or pen, press and hold the **PROGRAM** button on the motor until the blind jogs once.
2. Using a paperclip or pen, press and hold the **PROGRAM** button on the new transmitter until the blind jogs once. New transmitter is now added to the shade memory and can be used to operate the blind.

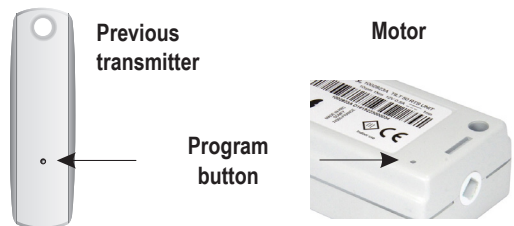


Adding Specific Channels to the Blind (multi-channel transmitters only)

1. Using a paperclip or pen, press and hold the **PROGRAM** button on the previously addressed transmitter until the blind jogs once.

OR

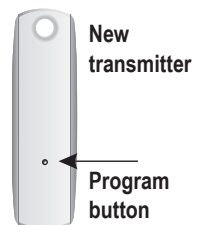
- 1a. Using a paperclip or pen, press and hold the **PROGRAM** button on the motor until the blind jogs once.



2. Select the desired channel (1-4 or all) by momentarily pressing the **Channel Selector Button** on the multi-channel transmitter.



3. Press and hold the **PROGRAM** button on the multi-channel transmitter until the blind jogs once. Additional (new) channel is now added to the blinds' memory and can be used to operate the blind.

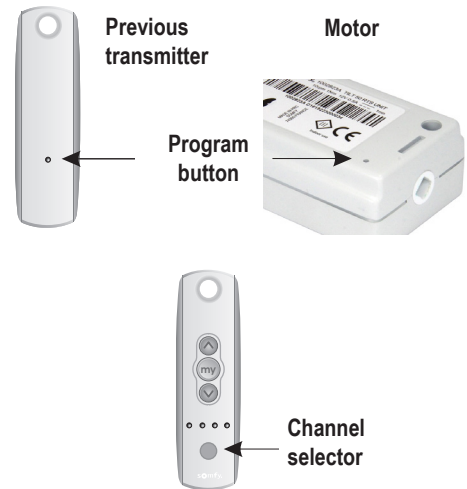


NOTE: To prevent unwanted Channel/Transmitter assignments when programming blinds within a group, **follow step 1a then proceed to step 2.**

Tilt 50 WireFree™ RTS Programming and Operation Instructions

Deleting Specific Channels/Transmitters

1. Using a paperclip or pen, press and hold the **PROGRAM** button on the previously addressed transmitter until the blind jogs once.
OR
- 1a. Using a paperclip or pen, press and hold the **PROGRAM** button on the motor until the blind jogs once.
2. Select the desired channel (1-4 or all) or transmitter (single channel) to be deleted.
3. Press and hold the **PROGRAM** button on the transmitter until the blind jogs once. Channel or transmitter is now deleted from the blind memory and will not operate the blind.



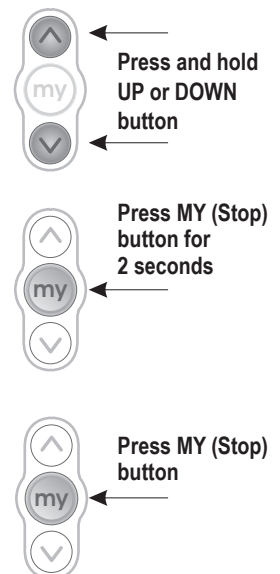
STEP 7 Resetting Motor (Erasing all Previously Programmed Limit Settings and Channels)

1. **To delete all previous settings:** Using a paperclip, press and hold the **PROGRAM** button, located on the top of the motor casing, until the blind jogs 3 times (approx. 12 seconds). All transmitters and limits will be erased from the motor memory. Motor is now reset to factory mode. Motor limits (slat positions) will need to be re-established.



Option 1: Setting an Intermediate (MY) Position

1. Press the **UP** or **DOWN** directional button on the previously addressed transmitter until the blind slats reach a desired intermediate position, then press the **MY (Stop)** button to stop. If necessary, adjust the desired slat position by pressing and holding either the **UP** or **DOWN** button.
2. Press and hold the **MY (Stop)** button on the transmitter until the blind jogs. Intermediate **MY** slat position is now added to the memory.
3. Activate the blind intermediate position by pressing the **MY (Stop)** button from **ANY** slat position. Slats will move to the closed **DOWN** position prior to stopping at the programmed **MY** position.



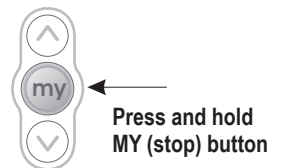
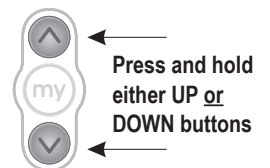
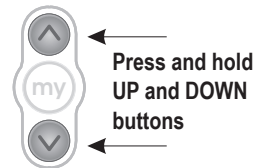
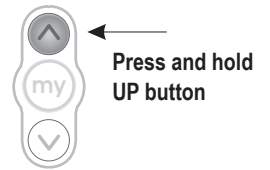
NOTE: Blind should be stationary prior to activating intermediate position function. If slats are actively moving (in-motion), the **MY (Stop)** button should be pressed twice.

To Delete: Activate blind to **MY** position, then press and hold the **MY (Stop)** button for 5 seconds. Previous **MY** position is now deleted. Proceed to Option 1, Step 1 to set the new intermediate (**MY**) position.

Tilt 50 WireFree™ RTS Programming and Operation Instructions

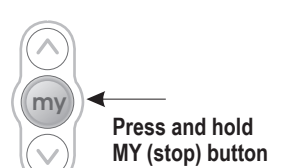
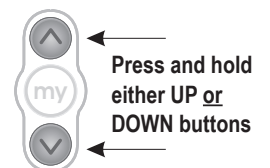
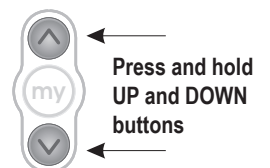
Option 2: Re-adjusting Upper Limit (UP slat position)

1. Press the **UP** directional button on the transmitter. Blind will tilt to the pre-set **UP** limit.
2. Once the blind stops at the pre-set **UP** limit, press and hold the **UP** and **DOWN** buttons simultaneously on the transmitter until the blind jogs.
3. Press and hold either the **UP** or **DOWN** button on the transmitter to adjust slats to the new position.
4. Press and hold the **MY (Stop)** button until the blind jogs.
New Upper Limit (Up Stop Position) is now added to the memory.



Option 3: Re-adjusting Lower Limit (DOWN slat position)

1. Press the **DOWN** directional button on the transmitter. Blind will tilt to the pre-set **DOWN** limit.
2. Once the blind stops at the pre-set down limit, press and hold the **UP** and **DOWN** buttons simultaneously on the transmitter until the blind jogs.
3. Press and hold either the **UP** or **DOWN** button on the transmitter to adjust slats to the new position.
4. Press and hold the **MY (Stop)** button until the blind jogs.
New Lower Limit (Down Stop Position) is now added to the memory.



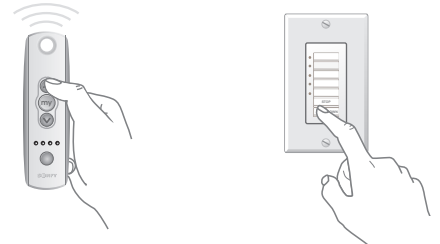
Tilt 50 WireFree™ RTS Programming and Operation Instructions

Operating Instructions are for use with Telis 1 & 4, DecoFlex 1 - 4 or Modulis

USER MODE: Operating the Blind (tilting the slats)

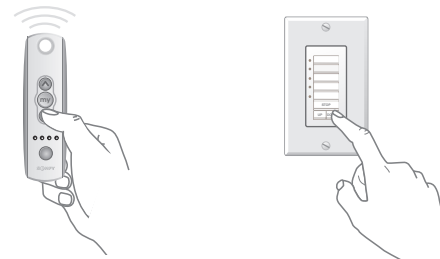
Telis & DecoFlex Switch Only

Press and hold the **UP** button to open the blind slats. Release the button when the desired position is reached. **Blind slats will operate at ½ speed** or press momentarily on the **UP** button and blind slats will move to the programmed limit (**slat position**) at full speed.



Telis & DecoFlex Switch Only

Press and hold the **DOWN** button to close the slats. Release the button when the desired position is reached. **Blind slats will operate at ½ speed** or press momentarily on the **DOWN** button and blind slats will move to the programmed limit (**slat position**) at full speed.



Using the Scroll Wheel (tilting the slats)

Modulis Only

Scroll the wheel of the Modulis transmitter to move the blind slats up or down. The slats will move in relation to the motion of the wheel on the transmitter.



Modulis Only

Press momentarily on the **UP** button to open the blind slats. Press the **MY** button to stop the movement of the slats. If the stop command is not desired, slats will continue to move to the pre-programmed limit (**slat position**).



Modulis Only

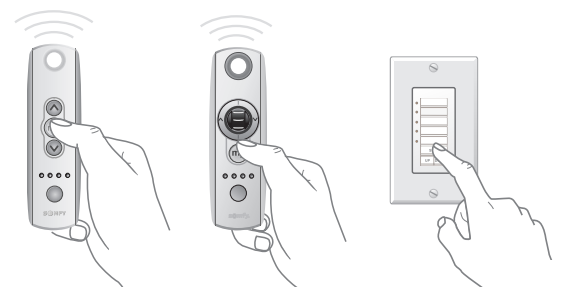
Press momentarily on the **DOWN** button to close the slats. Press the **MY** button to stop the movement of the slats. If the stop command is not desired, slats will continue to move to the pre-programmed limit (**slat position**).



Activate the Preferred (MY) Position

Telis, Modulis & DecoFlex Switch

Press momentarily on the **MY (Stop)** button. The slats will start moving and stop at the pre-programmed “preferred” slat position.



SOMFY® is the leading global manufacturer of strong, quiet motors with electronic and app controls for interior and exterior window coverings. Over 270 million users worldwide enjoy the more than 150 million motors produced by Somfy. During the past 40+ years, Somfy engineers have designed products for both the commercial and residential markets to motorize window coverings such as interior shades, wood blinds, draperies, awnings, rolling shutters, exterior solar screens and projection screens. Somfy motorization systems are easily integrated with security, HVAC and lighting systems providing total home or building automation.

SOMFY SYSTEMS INC
SOMFY NORTH AMERICAN HEADQUARTERS

121 Herrod Blvd.
Dayton, NJ 08810
T: (800) 22-SOMFY (76639)
NJ: (609) 395-1300
F: (609) 395-1776

FLORIDA

6100 Broken Sound Pkwy. N.W.
Suite 14
Boca Raton, FL 33487
T: (800) 22-SOMFY (76639)
F: (561) 995-7502

CALIFORNIA

15291 Barranca Parkway
Irvine, CA 92618-2201
T: (800) 22-SOMFY (76639)
F: (949) 727-3775

SOMFY ULC

SOMFY Canada Division

5178 Everest Drive
Mississauga, Ontario L4W2R4
T: 1-800-66-SOMFY (76639)
CN: (905) 564-6446
F: (905) 238-1491

www.somfysystems.com

A BRAND OF **SOMFY** GROUP

P-0025

© Copyright Somfy Systems, Inc. 4/2016